



The Center for Art  
Culture & History  
**EXETER**

MARCH 2023

# THE Exchange

A newsletter on  
the Art, Culture,  
and History  
of California's  
Heartland



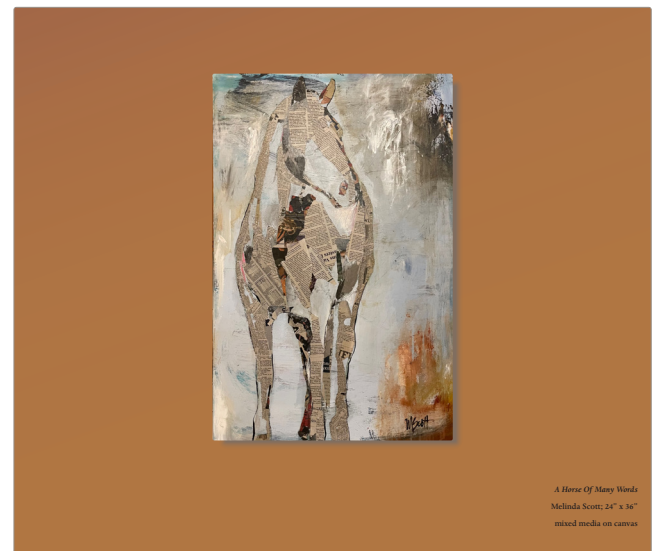
## CACHE opens LOCALS: An exhibition of 'Exeter artists'

CACHE is excited to announce LOCALS, our art exhibition for March and April 2023. Our new show will feature local Exeter artists—or those with ties to Exeter. We are very fortunate to exhibit some extremely talented professional artists like Marty Weekly, Chuck Prudhomme, Jana Botkin, Melinda Scott, and Nadi Spencer showing along with many hobby artists from our area. LOCALS features a wide variety of mediums including drawing, watercolor, oil, acrylic, photography, and metal sculpture.

On the weekend of March 25th and 26th CACHE will participate in Arts Consortium's annual South Valley Art Tour. One of our artists, Chuck Prudhomme, will be on hand to paint an artwork and has generously offered to allow us to raffle it with proceeds going to CACHE. The gallery will open from 10-5 both days, and on Sunday, March 26th from 2-4 we will host an opening reception for our artists and the community to meet and celebrate what makes Exeter such a special community of artists.

We look forward to seeing you!

*Continued on next page*



*A Horse Of Many Words*  
Melinda Scott, 24" x 36"  
mixed media on canvas

# LOCALS

## MARCH-APRIL | 2023

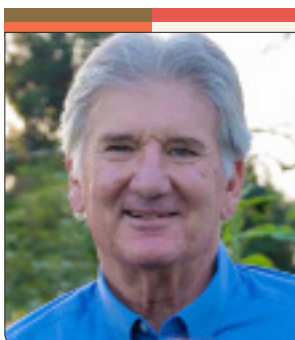
*An Exhibition of Artists from Exeter and the Exeter Diaspora*

Jana BOTKIN • Shirley CROW • Marty WEEKLY  
Chuck PRUDHOMME • Melinda SCOTT • Nadi  
SPENCER • Robyn STEARNS • Cathy TANTAU



### OPENING RECEPTION

## MARCH 26 | 2-4 p.m.



*A Word  
from our  
PRESIDENT*

**DWIGHT MILLER**

Welcome to our March issue of *The Exchange*, art lovers and history enthusiasts! I am thrilled to share with you all the exciting new developments at our art gallery and museum.

*Continued on next page*

## LOCALS show features Exeter and Exeter-affiliated artists, *continued from front page*

The LOCALS exhibition mixes all-star career artists with local hobbyists who are finding their paths in the visual arts. Those featured artists include:

**JANA BOTKIN.** Botkin credits her 6th grade teacher at Ivanhoe Elementary School with teaching her to draw. She spent several years in college in San Diego, changing schools and changing majors, until she realized she belonged back in her native Tulare County. She is not an Exeterite per se, but with her murals prominently featured locally and throughout the region, it's hard to argue she's not.

**MARTY WEEKLY.** Exeter Union High School graduate Marty Weekly has a long track record as a professional artist. His work is well known in Carmel, and more locally. He was instrumental in the founding of CACHE and its predecessor organization, the Exeter Historical Museum and Courthouse Gallery.

**CHUCK PRUDHOMME.** Prudhomme grew up on the plains of the Serengeti and in West African jungles which gave him a unique life perspective. And after retiring from his aviation career in 2002, Prudhomme decided to share his perspective through his paintings.

CACHE audiences will recall his 2018 two-person show here titled "The Magic of Art," along with Iva Fendrick.

Prudhomme may be a worldly traveler but he is no stranger to Exeter. As a teenager, Prudhomme and his family left Africa and settled in California, moving to Exeter in 1963 where he graduated from Exeter Union High School in 1965.

He told the Sun-Gazette: "As an oil painter, I am interested in documenting and sharing a moment in time of that space between mankind and nature," he explained. "I travel extensively looking for that ray of breaking light, a weather-beaten factory, an old dairy farm, a vibrant street scene or a dramatic coastal sunset."

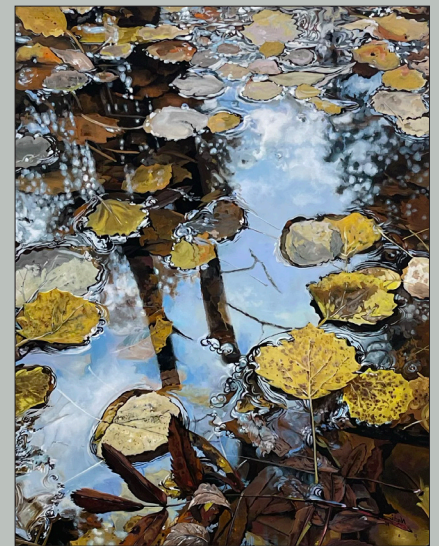
Prudhomme has received numerous career accolades, including in 2007 when he was selected to paint a large Christmas tree ornament for the White House, invited to a reception there by the First Lady Laura Bush. In 2011 he was awarded Best of Show at the annual Plein Air Paintout in Casa Grande, Ariz. and selected to participate in The Favell Museum Invitational Art Show in Klamath Falls, Oregon. In 2013 he was featured in Southwest Art Magazine.

**NADI SPENCER.** Locals have long known the work of Three Rivers artist Nadi Spencer. Those of a certain era will recall Nadi Graziani from Exeter Union High School days. Spencer has been featured in the region's art shows for well over four decades.

**ROBYN STEARNS.** Former Exeter Mayor and City Council member Robyn Stearns has her finger in many pies, including that of CACHE, where she serves as Vice President of the Board of Directors, and a longstanding career in real estate. We're not sure



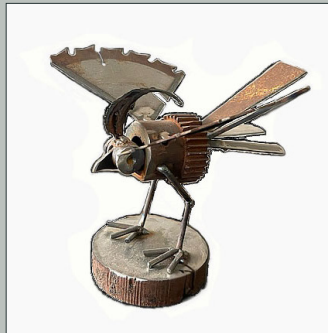
*FROM TOP, CLOCKWISE:*  
*Featured art in LOCALS currently on view at CACHE include works by Marty Weekly's Mt. Whitney Burnin' Golden in the Sky; paintings by Nadi Spencer; Chuck Prudhomme; and Robyn Stearns's Neutral Abstract.*



how she finds time for all that, her family, and her painting hobby, but she manages just fine.

Other locals exhibiting in the show include Melinda Scott, Shirley Crow, and others.

As with any community volunteer-run cultural nonprofit, a number of people come together to make things happen at



FROM TOP, CLOCKWISE:  
Featured art in LOCALS on  
view at CACHE include works  
by Melinda Scott; Shirley Crow;  
and Jana Botkin.

## A Word from our President, cont'd

We have been working tirelessly to create new experiences for our visitors and showcase the best of the regional art world and create a special place to tell the stories of Exeter's past. Here are a few things we are particularly proud of:

Firstly, we have also incorporated new technologies that allow visitors to engage with our artworks in innovative ways. Whether you are a first-time visitor or a seasoned art connoisseur, we hope that our new show will inspire and delight you. Bring your smart phone and headphones to hear artists talk about their art.

Secondly, while this month's show features artists with a link to Exeter, CACHE's mission: We "bring to life the art, culture and history of California's heartland" emphasizes our place in the larger Central California region. Some contemporary pieces in this show are sure to spark conversation and debate. Our curatorial team has worked hard to create compelling narratives around these artworks, providing context and insight into the artists' lives and practices.

Finally, we understand that art is not just something to be looked at in silence, but also something to be experienced, discussed, and enjoyed. We hope the artists painting on the patio during the South Valley Art Tour weekend will help create a vibrant and engaging community around our gallery and museum.

Of course, none of these developments would be possible without the ongoing support of our visitors, donors, and sponsors. We had more than 220 visitors to the gallery in January and February. We are grateful to all of you for helping us to realize our vision for this vital institution. We hope that you will continue to visit us, engage with our artworks and artists, and be a part of the exciting future of our center.

Thank you for your support, and we look forward to welcoming you soon.

Warm regards,  
**Dwight Miller**  
President, CACHE

## CACHE joins key museum professional organizations

CACHE has recently expanded its affiliations and network and is now a member of several important museum groups, key to establishing the highest professional museum standards.

According to CACHE President Dwight Miller, "We are now members of the American Alliance of Museums; the Tulare-Kings Alliance of Museums; and the Arts Consortium, our region's officially recognized California Arts Council partner as designated by the Tulare County Board of Supervisors," Miller added, "Additionally, CACHE recently became signatory to the Tulare County Office of Education's arts in schools initiative, reflecting our emerging focus on education partnerships." •

CACHE. We are grateful to the following for making LOCALS a success: Miguel Pujol, Robyn Stearns, Jim Tyler and Kelsey Giles for show layout and installation; Hometown Emporium for sponsoring the opening reception; and lastly, our gratitude to Joanie Constable-Gray for organizing the exhibition, her final one for CACHE. Our thanks to her for her service to the art community and to our organization. •



# CACHE sponsors 'Go Native' cultural event at Kaweah Oaks



RIGHT: Hands-on learning, drumming—and eating Native foods—are a big part of Go Native, the annual Native American celebration happening May 27 at Exeter's Kaweah Oaks Preserve, sponsored by CACHE. (PHOTOS: John Greening)

tribal members and Sequoia Riverlands Trust for this important cultural event that celebrates the traditional indigenous arts of our Yokuts," said Dwight Miller, CACHE President. "This relationship is important to fulfilling our commitment to the art, culture and history of California's heartland," Miller added.

The event features Native basketry, crafts demonstrations, Indian tacos, gaming activities for adults and kids, and drumming, among many other program features. •

CACHE recently announced sponsorship of the upcoming Go Native: A Native American Cultural Celebration held annually at Kaweah Oaks Preserve north of Exeter. The event is organized by Jennifer Malone of Exeter, a native member of the local Wukchumni tribe. Malone's mother, who passed away in 2021, was the last fluent speaker of the Wukchumni language and was notably eulogized in the New York Times. "CACHE is proud to partner with our local Wukchumni



# Upcoming CACHE History exhibits to explore local, regional lore

A variety of exhibitions featuring local and regional stories about California's heartland are in the works for upcoming programming. Currently in planning is an exhibit entitled Exeters Around the World, including our own. An exhibition

featuring the storied and unfortunately razed Hilliard/Strobridge House is in planning. And another show is in the works about the Exeter Fire Department, a surefire hit with the kids of all ages. Stay tuned for more information. •

## CACHE Board of Directors



Dwight Miller, President; Robyn Stearns, Vice President; Laura Hamilton, Treasurer; Patty Spott, Secretary. Additional Board Members include Kelsey Giles; Jim Tyler



LEFT: The 1934 Exeter girls softball team on a local fire truck. EFD history will be the subject of an upcoming CACHE history exhibition.